

***State of Missouri
Mutual Aid System***



10/01/2001

INTRODUCTION

Missouri communities have historically relied upon mutual aid resources in combating fire and other emergency situations exceeding the capability of a single jurisdiction. In 1990 the Missouri General Assembly enacted House Bill 1395-1448 which provided the support for establishing a statewide mutual aid system for major emergencies or disasters. This legislation was key to the subsequent mutual aid system as it exists today.

Initially, a representative cross-section of the fire service contributed to the organization of the system based on fire service experience. With continued input and support from all fire service throughout the state, the system stands ready to mitigate the effects of small or large scale emergency.

The Division of Fire Safety thanks those who have contributed their time and effort in making this system a reality.

Organization

The fire service includes all public entities furnishing fire protection within the state and all agencies and departments of the state which provide fire protection services. In the event of a major emergency or a state-wide disaster, all fire protection agencies become an organizational part of the system.

A. Local Representation

The fire chief or senior fire service official of each local entity providing fire protection will serve as fire service representative to their respective Area Coordinator.

B. Area Fire & Rescue Coordinator

Area Coordinators are selected by representatives of local fire service entities within an area (normally a county). They shall appoint one or more alternate Area Coordinators to serve in their absence.

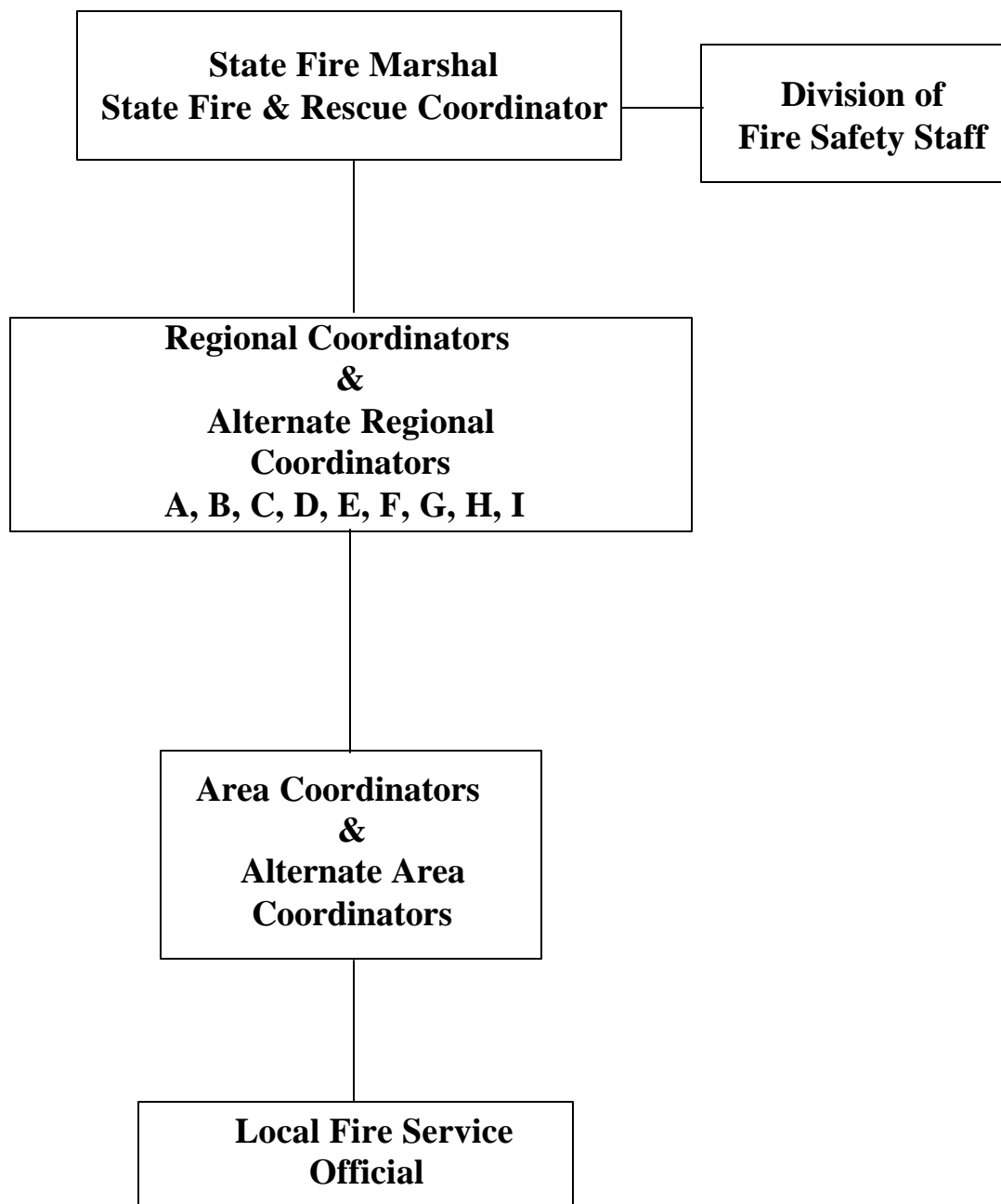
C. Regional Fire & Rescue Coordinators

Regional Coordinators are selected for a three year term by Area Coordinators within their respective regions. They shall appoint one or more alternate Regional Coordinators to serve in the absence of the Regional Coordinator.

D. State Fire & Rescue Coordinator

The State Coordinator is the State Fire Marshal in the Department of Public Safety, Division of Fire Safety. The State Fire Marshal is responsible for taking appropriate action on request for mutual aid received through Regional Coordinators. The State Fire Marshal serves on the Executive Committee in the State Emergency Operations Center when activated.

ORGANIZATIONAL CHART



Mutual Aid System

Activation of Plan (Mobilization)

A. When determined by the responsible fire and rescue official that jurisdictional resources are inadequate to cope with the emergency at hand, the following steps should be taken:

1. Activate **local** mutual aid plan. (This usually means calling neighboring fire services).
2. Notify the Area Coordinator.
3. Prepare to receive and utilize mutual aid requested as it arrives.

When jurisdictional and local mutual aid resources are determined inadequate:

4. Request needed resources according to **area** mutual aid plan.

B. The Area Coordinator will:

1. Evaluate resource availability within the operational area.
2. Coordinate the dispatch of requested resources from those available within the Area.
3. Notify the Regional Coordinator and report current situation and status of resources in the area.
4. Request mutual aid resources to fulfill request initiated by local jurisdiction or to reinforce seriously depleted resources within the Area.

C. The Regional Coordinator will upon notification.

1. Evaluate resource availability within the operational area.
2. Coordinate the dispatch of requested resources from within the region (according to the adopted plan)
3. Notify the State Coordinator, reporting known situation and resource status of the region.

Mutual Aid System

4. The State Coordinator will upon notification:
 - a. Evaluate conditions and resource availability throughout the state.
 - b. Alert all other Regional Coordinators of anticipated inter-regional dispatch of fire service resources.
 - c. Activate appropriate Incident Support Team members.
 - c. Select regions from which resources are to be mobilized to fulfill requests.
 - d. Coordinate the response of inter-regional mutual aid resources.
 - e. Act as Fire Service Representative in the State Emergency Operations Center, if state mutual aid is activated.
 - f. Process messages and requests for fire resources received from the State EOC.

How To Request Mutual Aid

This information is presented to assist the local fire chief in obtaining emergency mutual aid assistance on a timely basis. This information is not intended to modify or change any existing agreements or operational plans between your agencies and other parties.

- 1) Contact your Area Fire & Rescue Coordinator
If unknown contact your Regional or State Fire & Rescue Coordinator
- 2) Identify yourself - Preferably the local fire chief will make the request. If unavailable, state “this request is being made for Chief _____.”
- 3) State the reason for your request. Provide as much information as possible. The Area Coordinator needs this information so your needs can be met as quickly as possible.
- 4) State the type(s) and quantity of fire service resources needed. Be specific. (Refer to resource list next page.)
- 5) State “when” you need the resources. Immediately or a later specified time.
- 6) State “where” resources are to report. An address, crossroad, staging area, etc. Be specific.
- 7) Identify a person to report to and what fire frequency incoming apparatus should use.
- 8) Is there a water system?



FIRE DEPARTMENT REGISTRATION MUTUAL AID EQUIPMENT INFORMATION WORKSHEET

MAIL OR FAX COMPLETED FORM TO:

**MISSOURI DEPARTMENT OF PUBLIC SAFETY
DIVISION OF FIRE SAFETY
P.O. Box 844
JEFFERSON CITY, MO 65102
FAX: 573-751-1744**

PLEASE TYPE OR PRINT

FIRE DEPARTMENT NAME:			FDID:
FIRE DEPARTMENT ADDRESS:			PHONE:
CITY, STATE, ZIP:			COUNTY:
CHIEF'S NAME:	E-MAIL ADDRESS:	PHONE:	
CONTACT PERSON (if other than chief):	E-MAIL ADDRESS:	PHONE:	
DEPARTMENT TYPE:		PERSONNEL (complete each applicable field):	
<input type="checkbox"/> ALL PAID <input type="checkbox"/> PART PAID / PART PAID PER CALL <input type="checkbox"/> ALL VOLUNTEER <input type="checkbox"/> ALL MEMBERS PAID PER CALL <input type="checkbox"/> PART PAID / PART VOLUNTEER		NUMBER PAID _____ NUMBER VOLUNTEER _____ NUMBER PAID PER CALL _____	
FIRE PROTECTION DISTRICT (yes/no):	NUMBER OF FIRE STATIONS:	POPULATION SERVED:	NUMBER OF SQUARE MILES IN DISTRICT:
NUMBER OF RESPONSES PER YEAR:	CODE ENFORCEMENT (circle or fill in blank):		
	BOCA UFC NFPA OTHER: _____		
SENATORIAL DISTRICT:		REPRESENTATIVE DISTRICT:	

MUTUAL AID EQUIPMENT INFORMATION See instruction sheet for Region and Coordinator

MUTUAL AID REGION (same as Hwy. Patrol Troop):	MUTUAL AID AREA COORDINATOR:
--	------------------------------

ENGINES (NFPA 1901 COMPLIANT)	IN USE	AVAILABLE	RESCUE UNITS	IN USE	AVAILABLE	
TYPE 1 1000 GPM OR GREATER 1200' 2 1/2 HOSE OR LARGER GROUND LADDERS BOOSTER TANK			HEAVY / MED AIR BAGS CRIBBING LIGHTING HYD / AIR OPERATED / ELECTRIC EXTRICATION TOOLS (i.e. HURST) PORTA POWER KIT GENERATOR POWER SAW			
TYPE 2 750-999 GPM 1200' 2 1/2 HOSE OR LARGER GROUND LADDERS BOOSTER TANK						
TYPE 3 TELESQUIRT			LIGHT PORTA POWER KIT HAND TOOLS			
TYPE 4 OTHER ENGINE NOT FITTING ABOVE SPECS.						
WATER TENDERS (TANKERS) NFPA 1901 COMPLIANT			SPECIAL EQUIPMENT / UNITS			
TYPE 1 1000-2499 GALLONS			AIR TEAMS MOBILE MECHANIC FUEL TENDER HAZ-MAT UNIT LIGHTING UNITS MOBILE COMMUNICATIONS			
TYPE 2 2500 + GALLONS						
TRUCK COMPANIES				PERSONNEL		
TYPE 1 AERIAL					F.D. PERSONNEL	
TYPE 1P AERIAL WITH PUMP / QUINT			SCUBA / DIVING			
TYPE 2 PLATFORM LADDER			RAPPELLING			
TYPE 2P PLATFORM LADDER WITH PUMP			EMT'S			
TYPE 3 SNORKEL			PARAMEDICS			
TYPE 3P SNORKEL WITH PUMP			BOMB TECH'S OR DISPOSAL			
BRUSH - WILDLAND UNIT						
PUMP, TANK, HOSE						

List other equipment not listed above on a separate sheet

Mutual Aid System

REGION IDENTIFICATION

REGION A

Bates
Benton
Carroll
Cass
Clay
Henry
Jackson
Johnson
Lafayette
Pettis
Platte
Ray
Saline

REGION B

Adair
Charition
Clark
Knox
Lewis
Linn
Macon
Marion
Monroe
Putnam
Ralls
Randolph
Schuyler
Scotland
Shelby
Sullivan

REGION C

Franklin
Jefferson
Lincoln
Perry
Pike
St. Charles
St. Francois
St. Louis
Ste. Genevieve
Warren
Washington

REGION D

Barry
Barton
Cedar
Christian
Dade
Dallas
Greene
Hickory
Jasper
Lawrence
McDonald
Newton
Polk
St. Clair
Stone
Taney
Vernon
Webster

REGION E

Bollinger
Butler
Cape Girardeau
Dunklin
Iron
Madison
Mississippi
New Madrid
Pemiscot
Ripley
Scott
Stoddard
Wayne

REGION F

Audrain
Boone
Callaway
Camden
Cole
Cooper
Gasconade
Howard
Miller
Moniteau
Montgomery
Morgan
Osage

REGION G

Carter
Douglas
Howell
Oregon
Ozark
Reynolds
Shannon
Texas
Wright

REGION H

Atchison
Andrew
Buchanan
Caldwell
Clinton
Daviss
DeKalb
Gentry
Grundy
Harrison
Holt
Livingston
Mercer
Nodaway
Worth

REGION I

Crawford
Dent
Laclede
Maries
Phelps
Pulaski



**Department of Public Safety
Division of Fire Safety
State Fire Marshal**

Phone Numbers

(800) 877-5688

(573) 751-2930

State Emergency Operations

(573) 751-2748